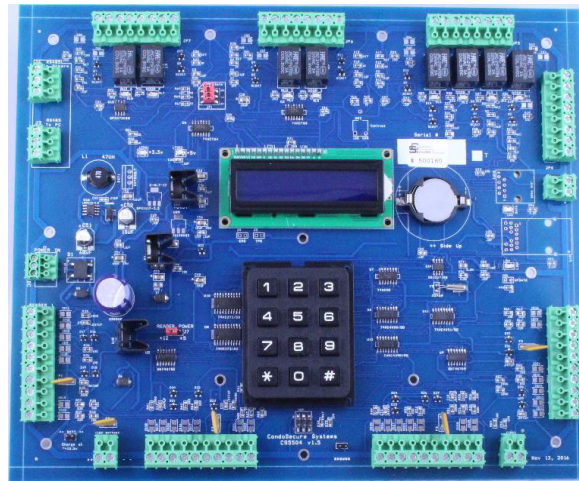


## ACCESS CONTROL SYSTEMS

**CS5504**

Four-doors with 4200 credentials

**CS5501**

Single door with 4200 credentials

**CS510K**

Four-doors with 10,000 credentials

**CS510N**Four-doors with 10,000 credentials  
and Ethernet connectivity

### Description

CondoSecure's CS550x Series Access Control Systems are 3-wire networkable controllers managing up to 128 doors in a single system.

The CS5504 is a four-door controller, featuring a unique LCD display and keypad. These allow a technician to easily setup and troubleshoot the CS5504 access panel by providing status information that panels typically provide with just a few simple status lights. Checking EOL resistors, comm link to PC, even checking "next card swipe" facility code and ID are all functions available right from the controller panel.

The CS5501 is a full featured, single-door version of the CS5504. It also is a perfect 'WIM' replacement for retrofit of older plex-type systems.

CondoSecure Systems offer a unique Messaging-to-Smartphone option. In applications using the CondoSecure Insuite Keypad Systems, the access control can be added seamlessly to the same PC using the CondoSecure front-end software application, providing the security staff with a beautiful, fully integrated operating environment.

When ordering readers, enhanced security can be implemented by adding an additional authentication code between readers and credentials on a site-specific basis, virtually eliminating casual fob duplication which is so prevalent, especially in residential applications.

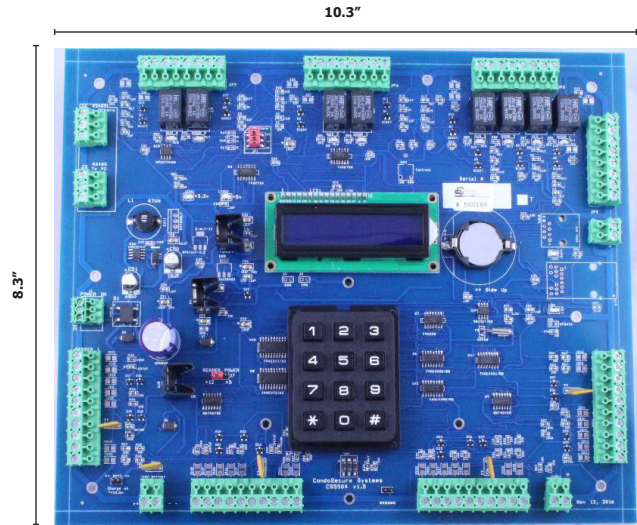
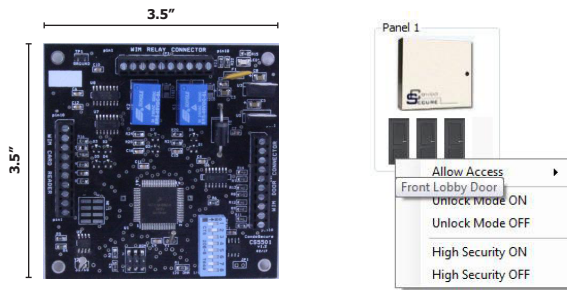
### System Features

- System size of up to 32 panels / 128 readers
- 2 Form-C relays per access point (CS5504 has 8)
- Dedicated Door sensor and Request-to-Exit input per reader with selectable polarity
- Up to 8 *additional* programmable input/outputs that can be correlated in a large variety of ways to other I/O connections, relays and to panel events (CS5501 has 2)
- Convenient on-board battery backup and charging capability on the CS5504
- Supports a vast array of card/fob readers & biometric verification devices
- Supports all credential formats, cards, radio-remotes, key fobs and Bluetooth-Low-Energy ("BLE" smartphone-as-credential) technologies
- Compatible to any Wiegand reader technology including Mifare, biometric, proximity and iClass
- Elevator Control for up to 112 floors to restrict users to specific floors
- 4200 to 10,000 credential capacity
- 128 customized access levels on 40 schedules
- 40 programmable holidays
- 1000+ offline event buffer
- Available in 4-door controller with Ethernet connectivity



## Access Control Panels

Available in 4-reader and single-reader models.



### CS5501

The CS5501 is our compact, 3.5” square Single-door controller with all of the power of the 4-door CS5504.

The size of the CS5501 allows flexible system placement at the door area if dictated by system needs.

It is also a perfect “WIM Replacement” which allows upgrades to older ‘plex-style’ systems, using the same pin-to-pin connections and +12Vdc external power source.

The CS5501 has a powerful 32-bit MCU and retains a local time-base clock and the FULL system database locally, so it makes all access decisions instantly at the controller without any need for the main PC to be online at all.

### CS5504 / CS510K / CS510N

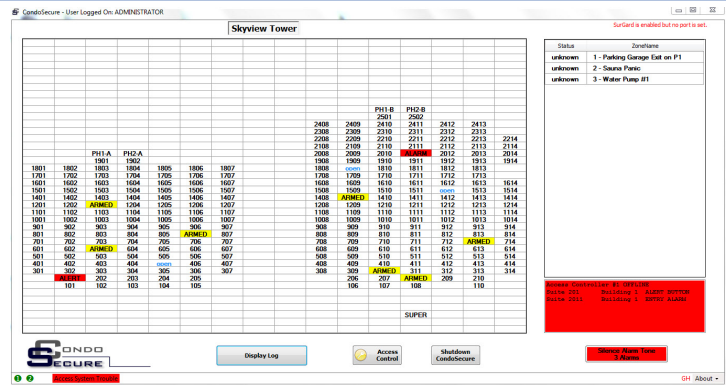
The CS5504 has all of the features of the CS5501 in a full 4-door controller with setup and troubleshooting capabilities provided by a unique addition of an alphanumeric display and keypad. This provides far more information than the simple few status lights typically found on other panels.

Flexible power, requiring a ~16VAC transformer per panel or share a larger +12Vdc supply between multiple panels.

A multitude of correlations are available based on any of the 8 door & RTE inputs as well as any of the 8 additional general purpose I/O lines and panel/reader/access events. The CS5504 has 8 FORM-C relays (2/reader), all of which are fully controllable via correlation triggers as well.

## Stand-Alone System and Full Integration with CondoSecure Suite Alarm Systems

In applications using the CondoSecure Insuite Keypad Systems, access control can be added seamlessly to the existing PC, using the same CondoSecure front-end software application they are already using, providing the security staff with a fully integrated user friendly operating environment.



### Elevator Control - CSECU & CSREL16

CondoSecure’s ECU Elevator Control Units integrate with the CS550x network, allowing complete control for Elevator Access, individual card level restrictions and single-click groups for the Security Staff to unlock floors for visitors. The system can work with up to 16 elevator cabs to a maximum of 112 floors/cab (with 7 x CSREL-16 modules).

CondoSecure’s Access Control with ECUs provides true ‘stacking’ of elevator calls, so multiple user events will not overwrite already in-progress ECU events. CS-ECU connects to the elevator system by way of FORM-C relays, with options for ‘All relay Override’ and ‘Always ON’ operation for power-fail-safe operation.

The CSECU Master board requires 50ma from a +12Vdc supply. Each CSREL-16 Relay board requires a maximum of 700ma @ +12Vdc, with all 16 relays energized. A full system with 112 relays, all energized would take approximately 5AMP @ +12Vdc.

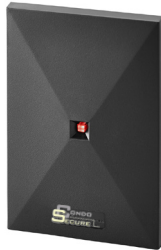
## Readers

CondoSecure provides a full range of readers with various sizes and mounting options as well as credentials - cards, fobs & radio remotes. Several popular ones are shown.



**CS300 Mullion Mount**

- Frequency: 125 kHz
- The CS300 is designed to fit on a 1 3/4" standard metal door or window frame.
- Mounting: Mullions, including metal door and window frames, as well as flat surfaces
- Dimensions: 1.7" W x 3.2" H x 0.7" D (43 mm x 81 mm x 18 mm)
- Voltage: +5 – 16 VDC
- Current Draw: 30 mA typical, 75 mA peak @ 12 VDC
- Read Range: Up to 5 inches (126 mm)
- Operating Temperature: -40° F to 149° F (-40° C to +65° C)
- Color Options: Black and a white snap-on cover included standard
- Audio Tone Beeper included standard
- Indoor & Outdoor Installation



**CS500 Single Gang Mount**

- Frequency: 125 kHz
- The CS500 is a switch plate reader designed to easily mount directly on a single gang box with a read range of up to 8 inches (20 cm).
- Mounting: Metal or plastic US single-gang wall box, as well as flat surfaces
- Dimensions: 3" W x 4.6" H x 0.4" D (76 mm x 117 mm x 10 mm)
- Voltage: +5 – 16 VDC
- Current Draw: 35 mA typical, 75 mA peak @ 12 VDC
- Read Range: Up to 8 inches (202 mm)
- Operating Temperature: -40° F to 149° F (-40° C to +65° C)
- Color Options: Black and a white snap-on cover included standard
- Audio Tone Beeper included standard
- Indoor & Outdoor Installation



**CS-DELTA-3 / CSBLE**

- Frequency: 13.56 MHz
- The CS-DELTA readers are based upon the world-standard MIFARE® technology, ideal for ISO14443 applications
- Compatible with credentials with enhanced smartcard encryption and optional DESFire® EV1/EV2 support
- Mounting: Same as CS300 / CS500
- Dimensions: Same as CS300 / CS500
- Voltage: +5 – 14 VDC
- Current Draw: 135 mA typical @ 12 VDC
- Read Range: Up to 1 1/2" & 3 inches (38/76 mm)
- Operating Temperature: -40° F to 149° F (-40° C to +65° C)
- Color: Black
- Audio Tone Beeper included standard
- Indoor & Outdoor Installation
- CSBLE also reads Smartphone credentials

## Credentials

CondoSecure Access Controllers can work with all credentials (with appropriate reader) with a variety of formats including SIA26, CSN and the high-security CondoSecure36 format. Radio Remotes are available in dual-purpose versions that can double as entry fobs for use at all readers in a systems.



**CSWRR-44  
Long-Range Receiver**

- Frequency: 433 MHz
- Range: adjustable up to 200 feet (61.0 m)
- Dimensions: 3.4" W x 6.3" H x 2.3" D (86.4 mm x 160 mm x 58.4 mm)
- Voltage: 12 VDC nominal
- Current Draw: 120 mA typical @ 12 VDC
- Operating Temperature: -40° F to 149° F (-40° C to +65° C)
- Indoor & Outdoor Installation



## Ordering Information

Controller	Features
CS5504	4-Door Access Controller in metal cabinet. Requires ~16VAC transformer and 7AH SLA battery, not included
CS5501	Single-Door 3.5" Controller Full Featured & as "WIM Replacement" (no cabinet, backboard mount). Requires external +12Vdc power
Readers	
CS300	Mullion-mount. Designed to be mounted to metal door/window frames
CS500	Mounting to a standard North American single-gang wall switch box and other flat surfaces
CS403P or D / CS405P or D 125kHz & 13.56Mhz	Impact-resistant readers intended to be installed in locations where crime and vandalism are constant threats
CS-DELTA-3	Mullion-mount. Designed to be mounted to metal door/window frames
CS-DELTA-5	Mounting to a standard North American single-gang wall switch box and other flat surfaces
CSBLE	Combo Bluetooth (smartphone-as-credential) & Fob Reader
Access Credentials	
CSPSK 125-kHz Proximity	Fob - Small proximity tag designed to be carried on a key ring, includes a re-enforcing brass eyelet - SIA 26-bit or 'CondoSecure36' protocols
CS-WRR-22 for use with 2 button remotes	2-channel, long range radio-type receiver, features a transmitter receive range of up to 100-feet (30.5m), fixed range
CS-WRR-44 for use with 2 & 4 button remotes	4-channel, long range radio-type receiver, features a transmitter receive range of up to 200-feet (61m), adjustable range
CS-WRT-2H with 125kHz or 13.56 Mhz proximity module	2 Button Transmitter - 150' range - 433 MHz supports 125-kHz or 13.56-MHz Proximity SIA 26-bit and 'CondoSecure36' protocols
CS-WRT-4H with 125kHz or 13.56 Mhz proximity module	4 Button Transmitter - 150' range - 433 MHz supports 125-kHz or 13.56-MHz Proximity SIA 26-bit and 'CondoSecure36' protocols
CSDK1 13.56 Mhz proximity	Fob - Small proximity tag designed to be carried on a key ring, includes a re-enforcing brass eyelet - ISO14443-compliant
CSDC1	Card - ISO14443-compliant, clamshell, printable. 1K memory standard
CSDE2	Card - Graphics Card for printing on both sides. MIFARE® DESFire® EV1
Elevator Control	
CS-ECU-MASTER	Elevator Controller Master with one 16 floor CS-ECU-REL16 (expandable to 112 floors)
CS-ECU-REL16	Elevator Expansion Module - 16 Floors FORM-'C' & LEDs
CS-ECU-CAB	Cabinet for use with CS-ECU-REL16 for Floors 49 to 112
Accessories & Options	
CS-USB485	USB to RS485 converter, cable & drivers for Windows 7/8/10+ - with terminal block-to-DB9
CSGH (Autodial & Messaging to SmartPhone)	CondoSecure Messaging-to-Smartphone option - provides 1-click "no rolodex" autodial from database to residents and Messaging to SmartPhone (email server connection required for SmartPhone messaging)
Many other reader and credential options available	



*CondoSecure is an integrated design and manufacturing company specializing in the development and production of advanced security systems focused for the highrise living sector.*

Dealer: