



SuiteTouch CS2030 MiniTouch Keypad



CS2020 Classic Keypad

New Installation, New Construction & Retrofit

System Overview

CondoSecure’s Insuite Keypad System is a complete security system specifically tailored to highrise residential and office buildings. It allows security or concierge personnel to monitor all of the security devices in the building, from the insuite alarm keypads, to sauna panic buttons, garage exit doors and smoke detectors. It displays alarms in real-time on a local security operator’s display.

The CS4858 Main Controller and CSp-Software links to the insuite CS20-series Keypads. These have connections to the front suite door as well as available connections for infrared detectors, additional patio-door/window switches, smoke and CO alarms, and alert buttons. Activation of these when armed will cause the CondoSecure display software to show the alarm cause and location on the security operator’s screen.

Perfect for new construction projects, CondoSecure is also excellent for old, ‘orphaned’ insuite “plex-type” systems, *using the existing wiring.*

Messaging-to-Smartphone and ‘digital rolodex’ dialer capability provide more options for contacting residents when an alarm occurs, to announce a guest, or to message about a package to pick up.

The CondoSecure keypad fits over a standard single or 2-gang electrical box with optional plates to fit 3 & 4-gang boxes as well as custom sizes.

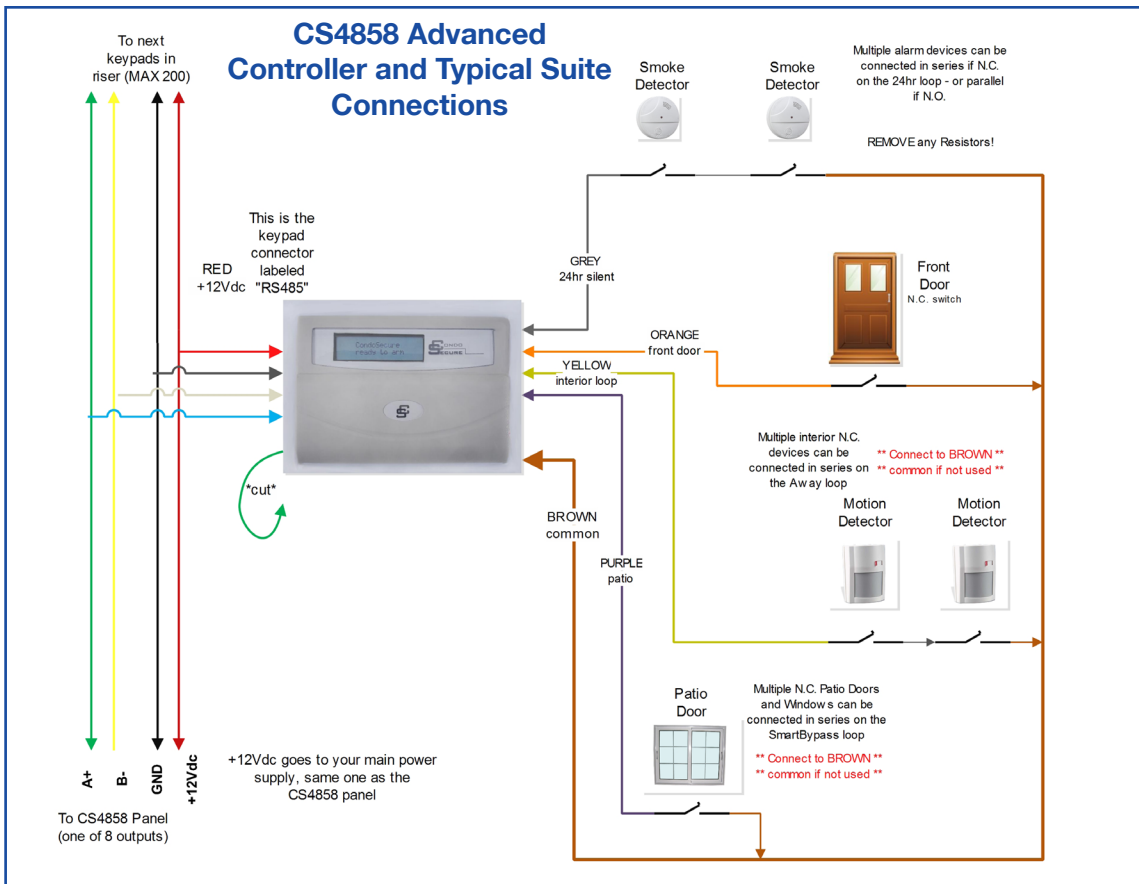
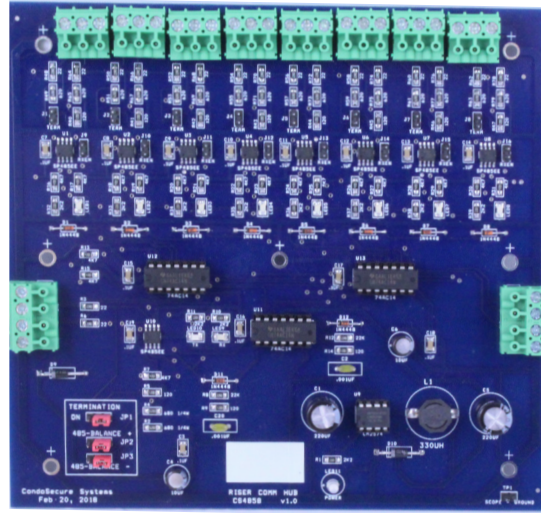
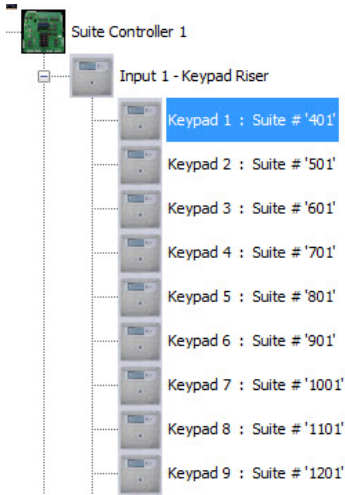
Two power wires and two communication wires are all that’s required. Existing buildings with only door contacts can also be upgraded – simply use just four of the existing conductors in each riser multicable to connect the CondoSecure Insuite Keypads.

Powerful software provides security staff with the ability to monitor entry alarms, alert buttons, interior motion detection & patio doors/windows, as well as timed ‘non-motion’ alerts for helping to protect vulnerable residents.

CS4858 Advanced Suite Controller Panel / Riser Board

The CS4858 is an 8-channel riser, high-speed communication/distribution panel providing system capabilities and additional keypad functionality, such as remote password configuration, time setting and reset. It is perfect for use in retrofit projects where the wiring is in place but exact wiring layout is not able to be determined. Keypads connect in parallel manner for this style system and have enhanced bidirectional communication, control, and messaging capabilities.

- Power Requirement: 750mA @ +12 Vdc power supply (the CS4858 does not distribute riser power)



CS2020 Classic Keypad

CondoSecure's CS2020 is our Classic Keypad, the standard installation for most projects. It's both very cost effective and full featured, allowing the connection of a large variety of typical in-suite protection devices.

A variety of mounting options and backplates are available for any sort of retrofit installation.



- Mounting: Surface mount, single/double gang box or with custom cut backplate
- Dimensions: 6.3" W x 4.4" H (160 mm x 112 mm)
- Voltage: +12 VDC
- Current Draw: 40 mA typical, 87 mA peak in Alarm Condition
- Emergency Mode & 'silent' Alarm
- SmartBypass™ of exterior doors/windows
- One-button Arming & Entry chime function
- Alert Button
- Non-motion/Wellness Alerts, overall and individual suite timing feature
- Master Code with 8 optional user codes

CS2022 SuiteTouch™ Keypad and CS2030 MiniTouch™

The SuiteTouch Keypads are our ultra-modern touchscreen Keypads. Offering all of the features of the Classic keypad plus on-screen time & date, easy menu driven actions for all programming, operation and user history log.

In addition to the mounting and backplate options of the Classic, both SuiteTouch models can operate in PORTRAIT (vertical) mode, useful for installations with restricted horizontal space.

Vertical and Horizontal Mount



The MiniTouch 1/2 as thick and much smaller than the SuiteTouch while maintaining a 5" display

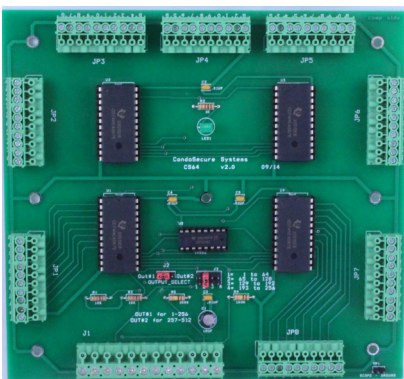


CS2022
SuiteTouch



CS2030
MiniTouch

- Plug-in compatible with CS2020 keypad installations allowing mixed systems
- Landscape or Portrait mount (ideal for replacing vertical-mount 'plex' type systems)
- CS2022 Dimensions: 160 x 120 x 36 mm
- CS2030 Dimensions: 146 x 106 x 19 mm
- Voltage: +12 to +16 VDC
- Current Draw: 80 mA typical, 150 mA peak @ 12 VDC
- Features of the CS2020, plus:
 - » On-screen time/date
 - » 6 total zone connections
 - » Programmable zone names and flexible type/polarity
 - » Dynamic screens and history log display



CS64 Zone Expansion Panel

The CS64 adds 64 inputs to the CondoSecure system, allowing connection of any devices with dry-contact outputs for alarming, such as additional garage exit doors, sauna alert buttons and motion detectors in common areas of the building.

All inputs have software options to set auto-arm and 'held opened' timers so exit doors can be used but will alert the security staff if they are held open for a specific time.

The CS64 panel can be connected through a legacy CS3200 (required) for a maximum total of 96 zones.



Stand-Alone System and Full Integration with CondoSecure Access Control Systems

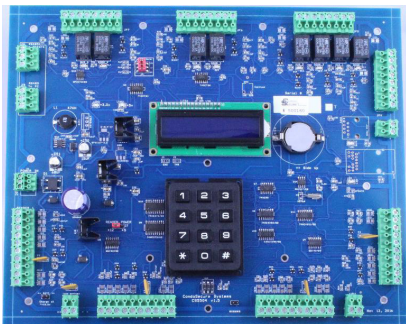
In applications using the CondoSecure Insuite Keypad Systems, access control can be added seamlessly to the existing PC using the same CondoSecure front-end software application they are already using, providing the security staff with a beautiful, fully integrated operating environment.

Access Control Overview

CondoSecure's CS550x Series Access Control Systems are 3-wire networkable controllers managing up to 128 doors in a single system.

The CS5504 is a four-door controller, featuring a unique LCD display and keypad. These allow a technician to easily setup and troubleshoot the CS5504 access panel by providing status information that panels typically provide with just a few simple status lights. Checking EOL resistors, comm link to PC, even checking "next card swipe" facility code and ID are all functions available right from the controller panel.

When ordering readers, enhanced security can be implemented by adding an additional authentication code between readers and credentials on a site-specific basis, virtually eliminating casual fob duplication which is so prevalent, especially in residential applications.



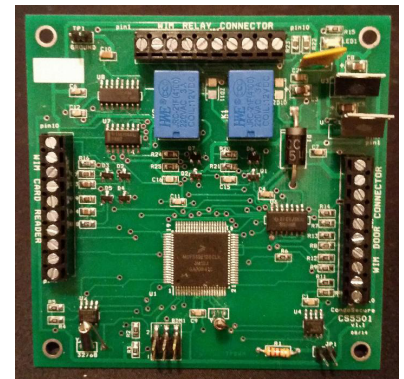
Access Control System Features

- System size of up to 32 panels / 128 readers
- 2 Form-C relays per access point
- Dedicated Door sensor and Request-to-Exit input per reader with selectable polarity
- Up to 8 *additional* programmable input/outputs that can be correlated in a large variety of ways to other I/O connections, relays and to panel events (CS5501 has 2)
- Convenient on-board battery backup and charging capability on the CS5504
- Supports a vast array of card/fob readers & biometric verification devices
- Supports all credential formats, cards, radio-remotes, key fobs and Bluetooth-Low-Energy ("BLE" smartphone-as-credential) technologies
- Compatible to any Wiegand reader technology including Mifare, biometric, proximity and iClass
- Elevator Control for up to 112 floors to restrict users to specific floors
- 4200 credential capacity
- 128 customized access levels on 40 schedules
- 40 programmable holidays
- ~1000 offline event buffer
- Unlimited Facility Codes are supported
- Several Industry standard card formats are supported
- Custom card formats are supported through a custom format setup screen

CS5501 Single Reader Controller

The CS5501 is a full featured, single-door version of the CS5504. It also is a perfect 'WIM' replacement for retrofit of older plex-type systems.

With all of the power and local database facility as the CS5504, this 3.5" square panel is perfect for controlling a remote overhead door, being well suited to connecting right at the radio receiver, extending the access system via just a 4-wire power/comms loop.



New Installations

New condo towers were in mind when we designed our premium CS2030 SuiteTouch and CS2020 Classic LCD keypads. With our ultra modern SuiteTouch touchscreen or the user-friendly text display, backlit rubber buttons and the sleek molded housing and keypad cover of the CS2020, we have a keypad to fit into any upscale interior design.

Retrofits

We have an upgrade solution for everything, in fact we have designed the our systems for exactly that.

CondoSecure is the perfect upgrade solution for any older system, especially old “orphan” systems; those installed long ago made by now defunct manufacturers.

There are dozens of different types of old condo suite security systems, ranging from mechanical annunciator systems to ancient keypad systems. These “orphaned” systems typically have large numbers of nonfunctional suites and the Property Managers simply need a clear alternative. Our team and Dealers have extensive experience in all manner of upgrades and would love the opportunity to assist you.

With optional 3 & 4-gang mounting plates and any custom size made in our laser-cut facility, the CS20xx keypads are perfect for directly replacing any older system from the 1990s to the present.

CondoSecure utilizes the existing wiring, allowing great savings in time and costs for retrofit upgrading of these important building systems.

Keypad Interchangeability

The CondoSecure Classic LCD Keypad is fully interchangeable with the SuiteTouch and MiniTouch keypads. This allows dealers to offer both style keypads to a project, where the developer or condo corporation only pays for the Classic keypads for a system and individual residents can opt for a modern touchscreen in their home if they choose, paying the dealer the difference directly.

Software Features

The CondoSecure CSp Software has many features that allow for very easy use by the Security Staff of a condominium as well as by the residents.

- Intuitive operation for the security staff with just 2 ‘clicks’ to respond to most alerts
- Unique Birds-Eye view of each condo tower with plain text status indications with color coded emphasis
- Multiple user permission levels assignable to up to 50 unique operators
- Special “View Only” login, for when the system is attended by an untrained operator, such as when the Guard must leave the desk for a few minutes
- Optional ability to Disarm keypads via access control fob
- SQL database storage and reporting to browser page allows desired data to be exported to other audit systems
- Message to suite keypad display, individual suite or global message/reminder
- Messaging-to-Smartphone option for Guard or Resident alerts
- Non-motion/Wellness Alert feature is standard on the CondoSecure software platform
- Heat/freeze alert option with insuite HeatMap ability for Energy Management

* The CondoSecure Systems requires a Windows 7/8/10+ PC for operation

Picture-Perfect Single-View Security Display

A picture is worth a thousand words....

You need all the information at a single mouse click, and you also need all this information when it's relevant, not a screen full of obscure text, while the one true event that needs your attention right now is buried there - somewhere.

CondoSecure has ergonomically designed all of its security software to be "single-glance and respond" drastically reducing the time required to identify an alarm or trouble condition.

Click a suite number to see owner information and notes for that suite, such as telephone numbers, parking spots and any special instructions for that suite.

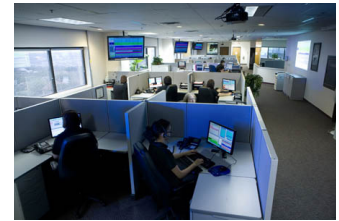
The screenshot shows the 'Skyview Tower' security display. It features a large grid of suite numbers (e.g., PH1-A, PH2-A, PH1-B, PH2-B) with some cells highlighted in red to indicate an alarm. On the right, a 'Status' panel lists zones: '1 - Parking Garage Exit on P1', '2 - Sauna Panic', and '3 - Water Pump #1'. Below the grid are buttons for 'Display Log', 'Access Control', and 'Shutdown CondoSecure'. A red alert banner at the bottom right reads 'Access Controller #1 OFFLINE' and 'Alarm 201 Building 1 ALARM SUPER'.

This inset window displays a list of alarm zones with corresponding status indicators: 'ARMED' (yellow) and 'ALARM' (red). The zones listed are: 1 - Front Door, 2 - Back Door, 3 - West Garage Entrance, and 4 - East Garage Entrance.

Central Station - RemoteReport™ IP Monitoring Option

Supporting a standard recurring-revenue model, CondoSecure allows for off-site supplemental monitoring for individual residents that wish an additional level of security, or for the entire building as a single account with each suite defined as a partition.

RemoteReport is available as an option on the CSp Software and can allow some or all of the suites on the CondoSecure system to send an TCP/IP alarm signal to a central monitoring station in addition to displaying the alarm on the main local CondoSecure PC..



Single Click Auto-Dial & Messaging-to-Smartphone

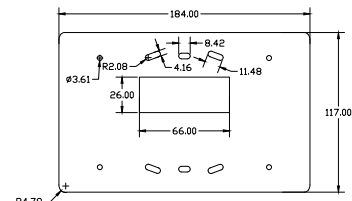
These system options provide a 'rolodex replacement' function, whenever you need to contact a resident. On system alarm, or any other time such as making a visitor announcement or a package delivery, simply click the suite number on the Single-View display and select "Dial" to be automatically connected to one of the pre-programmed telephone numbers for that suite.

For smartphone communication, click "message" and type a message for that suite. This will be sent via email or text to the registered address or smartphone number for that suite. Optional All-Call is available for sending general reminder messages, such as on Window Cleaning day.

The screenshot shows a 'Suite Owner Data' pop-up window for suite 102. It contains the following information: John Hastings, Suite SUPER, Main # (416)-555-0928, Cell # (647)-555-9906, Alt # (647)-555-8736, Parking # 124B, and Car Plates - BLSP657. A 'Dial' button is visible at the bottom right of the window. The background shows a grid of suite numbers from 102 to 107.

Backplates

CondoSecure provides a full range of standard-size and custom cut backplates for replacement of any older system keypads regardless of their footprint.



Frequently Asked Questions

What is the CondoSecure System?

CondoSecure is a complete security system specifically tailored to highrise residential buildings. It allows security or concierge personnel to monitor all of the security devices in the building, from insuite alarm keypads, fob access control points, sauna panic buttons & garage exits, smoke detectors & more. It displays alarms in real-time on the operator's display PC.

Will CondoSecure work in my building?

Yes. CondoSecure is designed to work with today's most popular security, fire and building alarm edge devices. CondoSecure works in both new buildings as well as in existing buildings and upgrades of old "keypad" and "fob" systems.

How does CondoSecure work?

The CS Main Controller and CSp-Software links to the insuite Keypads. These have connections to the front suite door as well as available connections for infrared detectors, additional patio-door/window switches, smoke and CO alarms, and panic buttons. Activation of these when armed will cause the CondoSecure display software to show the alarm cause and location on the security operator's screen. Fob access doors are fully controlled, if added to the system.

Who uses CondoSecure?

CondoSecure has been used in condominiums, office towers, hospitals, hotels, and other buildings just like yours, around the world.

Is CondoSecure difficult to set up?

Not if you are used to configuring standard alarm panels. A little upfront organization is all that is required. CondoSecure is programmed with riser connection information, how many risers and what suite numbers are used in each.

Can I customize the look of my CondoSecure?

Yes. While CondoSecure comes pre-programmed with an intuitive red, yellow, green and blue color scheme for devices in alarm, trouble, normal status and 'open', you can choose a customer building screen heading. Once you program the physical connection information into CondoSecure, you are free to layout the building suite numbers for the operator however you wish.

Can I monitor a HVAC systems with the CondoSecure?

Yes. The CondoSecure System works with any devices that provide dry-contact status inputs & outputs.

How does CondoSecure color coding work?

Usually, suite numbers are displayed in normal black-on-white text. Open doors will flash blue while alarms will flash red. Armed suites and common area doors are displayed as yellow. The operator always has an instant "Bird's-eye" view of the entire building status. When alarms occur there is also an audible alarm tone and additional visual cues to alert security staff. Access control points are shown with animated door graphics to show their live status.

I have an old, 'orphaned' insuite system.

Will CondoSecure work with the existing wiring?

Yes, in almost all cases. The CondoSecure Keypads (both the Classic LCD Display and SuiteTouch touchscreen pads) fit over a standard single or 2-gang electrical box with optional plates to fit any other custom size areas. They use 2 power wires and 2 communication wires, just like older, obsolete 'plex' systems, so existing building wiring can be used - a substantial savings.

Can I use CondoSecure to integrate my fire and security systems?

Yes, to a certain extent. CondoSecure is often used as a supplementary fire 'early warning' system, connecting insuite smoke and CO detectors to the insuite keypad, for monitoring and display on the CondoSecure PC display.

Can I monitor more than one building from a single computer?

Yes. The CondoSecure software can connect to up to six towers with CS4858 Main Controllers in each.

What kind of computer will I need?

CondoSecure Software runs on most modern desktop PCs, laptops, flat-panel, and touch screen computers with Windows 10 or newer operating system. The PC needs one available USB port for connection to the suite main controllers, and an additional USB is integrating with CondoSecure fob access systems.

Our on-site guards are part time. Can we still use CondoSecure?

Yes. CondoSecure has an optional RemoteReport IP Communicator which allows alarm reporting to CondoSecure certified Central Stations, using standard alarm panel protocols, either for the whole building or for individual suites that prefer a higher level of security.

Can messages be sent to residents from the system?

Yes. CondoSecure has an option to let the Concierge message residents to their Smartphones using text or email, all recorded in the system's database.

Ordering Information

Controllers		Features	
CS4858		CS4858 Advanced Communication Panel ("Riser Board") Allows 8 riser connections of up to 200 suites per riser Up to 4 panels fit into a CSCAB (order separately)	
CS3200		CondoSecure Common Area Monitor 32 inputs standard - up to 96 with an optional CS64 Expander Inputs can be set up with Door Held Open timers and basic alarm scheduling	
RemoteReport™		RemoteReport™ IP Alarm reporting option. Allows reporting of alarm and status conditions to an off-site monitoring station	
Keypads			
CS2020		InSuite Keypad w/9 user codes 5-zones of protection Plastic case surface mount w/ 32 character LCD Display	
CS2022 SuiteTouch™		SuiteTouch™ InSuite Keypad w/9 user codes 7-zones of protection Plastic case surface mount w/ real-time clock display, event history log Ultra modern Touch Screen display	
CS2030 MiniTouch™		All of the features of the CS2022 SuiteTouch in a smaller form factor	
"-TMP" Keypad Option Temperature Sense / Heat Map Capability		Add Energy Management capabilities to our keypad systems with a basic 'heat/freeze' alarm capability, or a full heat map insuite temperature tracking to help reduce electricity waste by residents in shared meter communities.	
Expansion			
CS64		64-Zone common area door/sensor expansion (requires a CS3200 for connection)	
CSCAB		Cabinet for up to four CS64, CSECU/REL & CS4858 panels	
CS2008 Smoke Early Warning System		System consisting of a CS4858 & CSp software specially configured for use as a "no keypad" Smoke/Water Detector monitoring system. System monitors the dry-contact outputs of up to 4000 suite smoke detectors and water sensors.	
Access Control			
CS5504		4-door access control panel w/8 form-C relays	
CS5501		Single-door access control panel w/2 form-C relays	
CSECU		Elevator Control Unit - elevator restriction for one cab, up to 16 floors (requires CSCAB)	
CS-REL16		16 floor extension for CSECU - up to 112 floors total per CSECU	
Accessories			
CS-USB485		USB to RS485 converter, cable & drivers for Windows - with terminal block-to-DB9	
CSGH (Click-to-Autodial & Messaging to SmartPhone)		CondoSecure Guard Handset/Messaging option - provides 1-click "digital rolodex" autodial from database to residents and Messaging to SmartPhone (email server connection required for SmartPhone messaging)	



CondoSecure is an integrated design and manufacturing company specializing in the development and production of advanced security systems focused for the highrise living sector.

Dealer: